



DORE HOLM

Urafirth, Heylor, Shetland, ZE2 9RH

Fixed price of £150,000

Dore Holm is a detached bungalow with beautiful original features, 2 reception rooms and 2 large double bedrooms. The property is double glazed, has an open fire in the livingroom and gas central heating throughout. Over the last few years a new kitchen and shower room have been fitted as well as a new roof. Enjoying fine unrestricted views over Ura Firth and having off road parking, a shed and greenhouse. Approximately 33 miles from Lerwick and 10 miles from Brae.

Viewing

Telephone 07977 897812 or 01595 743015

Energy Efficiency Rating

E (39)

Entry

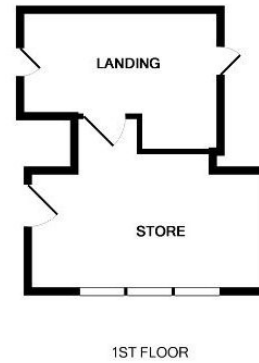
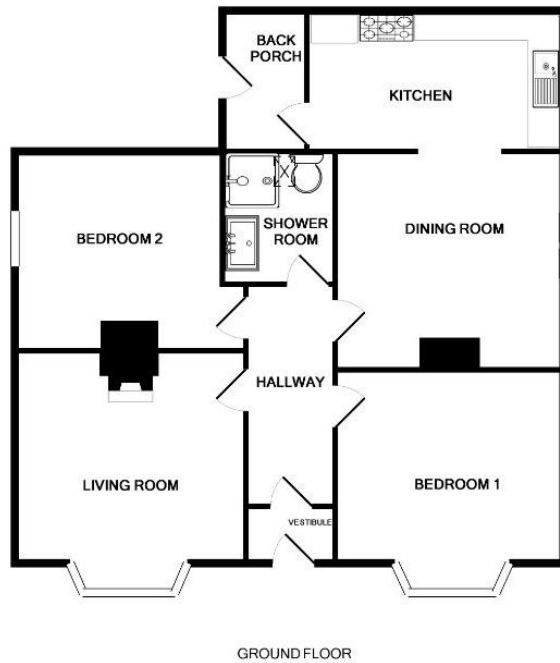
Early entry available

Council Tax

Band B

Home Report Available?

Yes



Measurements are approximate. Not to scale. Illustrative purposes only
Made with Metropix ©2019

ACCOMMODATION

- Vestibule (1.62m x 1.02m)
- Hallway (1.62m x 3.91m)
- Livingroom (4.16m x 3.82m)
- Dining Room (4.12m x 3.95m)
- Kitchen (4.67m x 2.54m)
- Back Porch (1.32m x 2.56m)
- Bedroom 1 (4.12m x 3.47m)
- Bedroom 2 (3.74m x 3.61m)
- Shower Room (1.70m x 2.17cm)

SERVICES

Electricity - Mains

Water - Connected

Drainage - Septic tank

Telephone - Connected

Broadband - Connected

Satellite TV - Connected

Heating – Gas central heating

DIRECTIONS

When entering Urafirth, pass the Valladale housing scheme and then cross a cattle grid. Dore Holm is the next house on the right and access to the parking area is to the south of Dore Holm.

"Dore Holm" is a small islet off the south coast of Eshaness. It is a natural arch, the shape has been compared to a horse drinking deeply from the water. There is an etching of the "Dore Holm" on an internal glazed door into the hallway.

In 2015 the owner renewed the kitchen, shower room, both external doors and installed a new combi boiler. The roof was fully replaced at the end of 2017. The accommodation is in good decorative order and located on the ground floor with a ladder giving access to the attic store. There is a large garden with a shed and greenhouse and a separate parking area.

Dore Holm has fine unrestricted views all year around but in February each year there is a spectacular view of the Northmavine Up Helly Aa procession walking along the road from Hillswick to Urafirth with the burning on the loch to the north of Dore Holm.



Dore Holm



Side of Dore Holm



Showing Dore Holm on the right



Dore Holm and access road



View from Dore Holm over Ura Firth



View from Dore Holm



Showing Dore Holm in the centre of the photo



Etching of "Dore Holm" islet on internal glazed door



Hallway



Livingroom



Livingroom



Dining Room



Dining Room



Kitchen



Kitchen



Kitchen



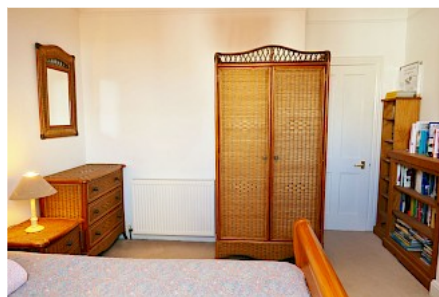
Bedroom 1



Bedroom 1



Bedroom 2



Bedroom 2



Shower Room

Note: While the foregoing particulars are believed to be correct, their accuracy is not guaranteed and they do not form part of any contract. The dimensions given are approximate only and are not warranted. Photographs may have been taken with a wide angle lens.

Neil Risk, Solicitor & Estate Agent

Nordhus, North Ness Business Park, Lerwick, Shetland, ZE1 0LZ, United Kingdom
Tel: **+44 (0) 1595 695262** Fax: **+44 (0) 1595 695331** Email: mail@neilrisk.com